



## » Climate FieldView Overview

5/12/17



# The Climate Corporation



## Vision

A digitized world where every farmer is able to optimize and flawlessly execute every decision on the farm.

## Mission

To help all the world's farmers sustainably increase their productivity with digital tools.



## **OUR BELIEF**

---

**THE NEXT BREAKTHROUGH  
IN AGRICULTURE WILL NOT  
BE DRIVEN BY GENETICS OR  
EQUIPMENT, BUT RATHER IN  
UTILIZING DATA TO  
OPTIMIZE DECISION MAKING**



2015 NCGA WINNER **532** BU/AC

NATIONAL AVERAGE **168** BU/AC

OPPORTUNITY GAP **364** BU/AC





**160** ACRES

**32,000** SEEDS / ACRE

---

**5,000,000** SEEDS



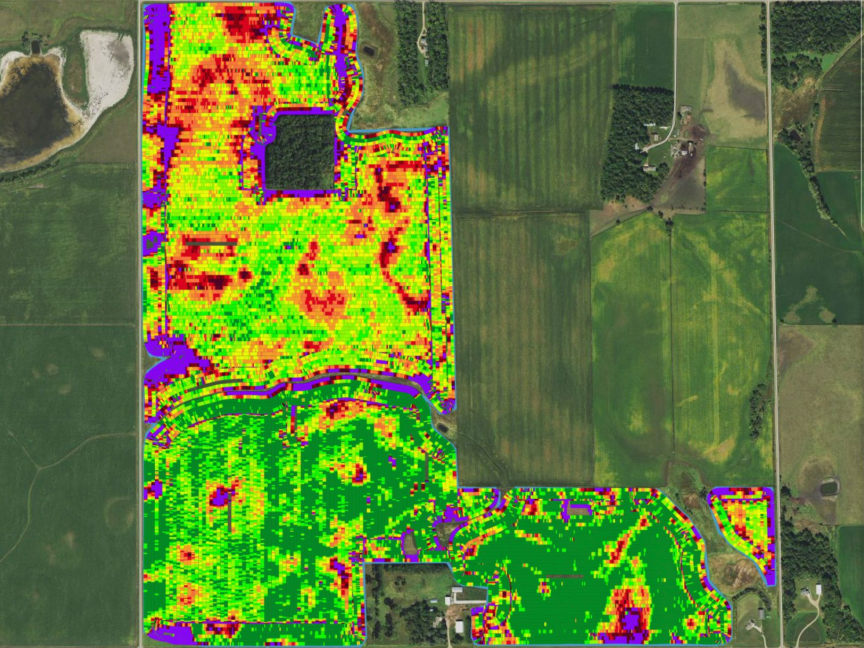
Verizon LTE

8:00 AM

95%

Jeff Home    2016 Corn    Yield

Navigation and map controls including zoom in (+), zoom out (-), full screen, list view, share, and home icons.



> 240 bu/ac
232 - 240 bu/ac
225 - 232 bu/ac
218 - 225 bu/ac
210 - 218 bu/ac
202 - 210 bu/ac
195 - 202 bu/ac
188 - 195 bu/ac

Legal



$$y = f(g, e, p) + \varepsilon$$

**YIELD**                      **GENETICS, ENVIRONMENT, FARMING PRACTICES**                      **VARIABILITY**

# OPTIMIZING YIELD THROUGH DIGITAL AGRICULTURE

---

YOUR DATA & FIELD

KNOWLEDGE COMBINED WITH

OUR RESEARCH & INVESTMENTS

IN DATA SCIENCE



**MANY  
DISCONNECTED  
SYSTEMS**





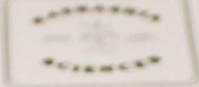




# LABORATORIES

DR. DACEY  
E. ILLINOIS 62565  
(217) 774-2421

Field ID: 54696  
Date: 10/06/2015  
Submitted By: OPERATOR R



# KSI LABORATORIES

300 S. WINDY  
MOUNTAIN, MOUNTAIN VIEW  
PHOENIX, AZ 85001

OPERATOR:                       
FIELD:                       
ACRES: 47.8

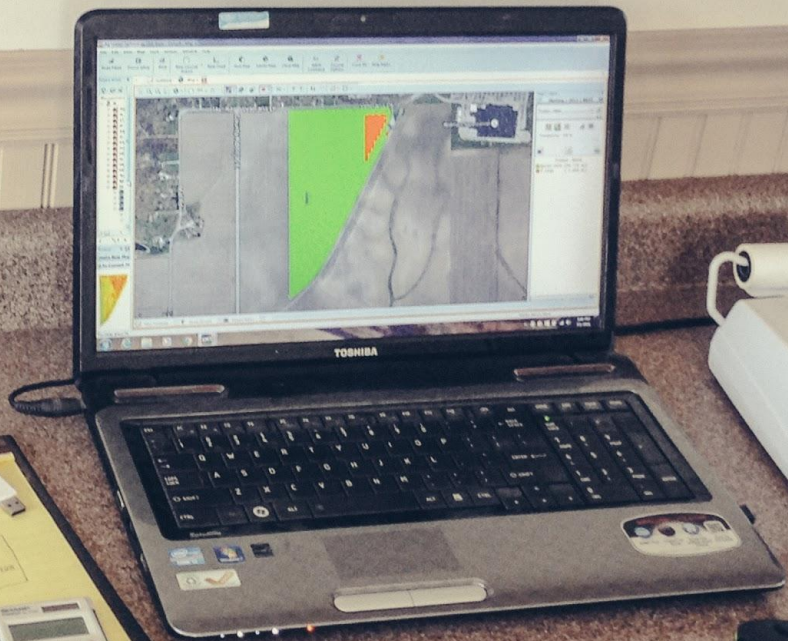
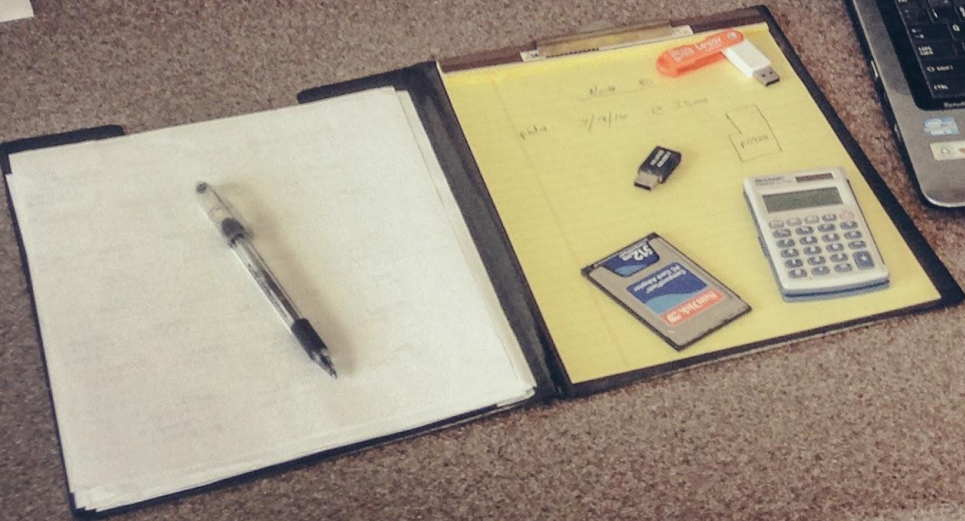
LAB: 10/06/2015  
DATE: 10/06/2015  
SUBMITTED BY: OPERATOR R

## SOIL TEST RESULTS

SAMPLE#	SOIL pH	BUFFER pH	NITROGEN Bt/A	PHOSPHORUS Bt/A	CALCIUM Bt/A	MAGNESIUM Bt/A	ORGANIC MATTER %	BASE SATURATION			
								CATION EXCHANGE CAPACITY	%Ca	%Mg	%K
1	6.3	-	66	204	-	-	3.3	-	-	-	-
2	6.3	-	49	268	-	-	2.5	-	-	-	-
3	6.2	-	50	356	-	-	2.6	-	-	-	-
4	6.5	-	145	728	-	-	2.6	-	-	-	-
5	6.3	-	48	336	-	-	2.4	-	-	-	-
6	6.5	-	58	352	-	-	2.5	-	-	-	-
7	6.5	-	44	376	-	-	2.6	-	-	-	-
8	6.5	-	112	264	-	-	3.0	-	-	-	-
9	6.3	-	134	292	-	-	2.8	-	-	-	-
10	6.5	-	65	316	-	-	2.2	-	-	-	-
11	5.4	-	50	320	-	-	2.5	-	-	-	-
12	5.7	-	53	356	-	-	3.3	-	-	-	-
13	6.1	-	66	268	-	-	2.5	-	-	-	-
14	5.3	-	53	216	-	-	-	-	-	-	-
AVERAGE	6.2	-	71	332	-	-	-	2.7	-	-	-

PH AVE. 6.4  
P1 AVE. 55  
K AVE. 302

EXTRACTED SAMPLES: 11,12,14,  
EXTRACTED SAMPLES: 4, 8, 9,  
EXTRACTED SAMPLES: 4,







CLIMATE  
**FIELDVIEW**<sup>TM</sup>





**ALL MY DATA IN  
ONE PLACE**

---

CENTRALIZED FIELD  
DATA MANAGEMENT



**SIMPLIFIED FIELD  
INSIGHTS**

---

VISUALIZATION & REPORTING THAT  
CREATE ACTIONABLE INSIGHTS



**OPTIMIZED SEEDING  
& FERTILITY**

---

DATA-DRIVEN SEED & FERTILITY  
SUBFIELD INSIGHTS